

**OFFERED AT
\$1.00/SF NNN**

1810 Commercial St NE Salem OR 97301 **BUILT FOR BUSINESS. READY FOR YOU.**

Position your business in this well-equipped space offering a functional blend of showroom, office, and shop areas. The layout is designed to support efficient operations with clear separation between workspace and customer-facing areas.

The shop is built with high ceilings, multiple overhead doors, and existing infrastructure including three-phase power and air lines. A dedicated office/showroom area with a separate entrance provides a professional front for client interaction, along with signage visibility along Commercial Street. Estimated NNN .20/sf.

Now available for lease, this property offers a practical and ready-to-use space in a central Salem location.

FEATURES

- Showroom & Shop
- 1,808 SF shop
- 869.44 SF office
- 2 overhead doors
- 15' clear height
- 3 phase power
- Forced air heat
- Installed air lines
- CMU Block construction
- Separate office entrance
- Frontage signage opportunity
- 6 parking stalls



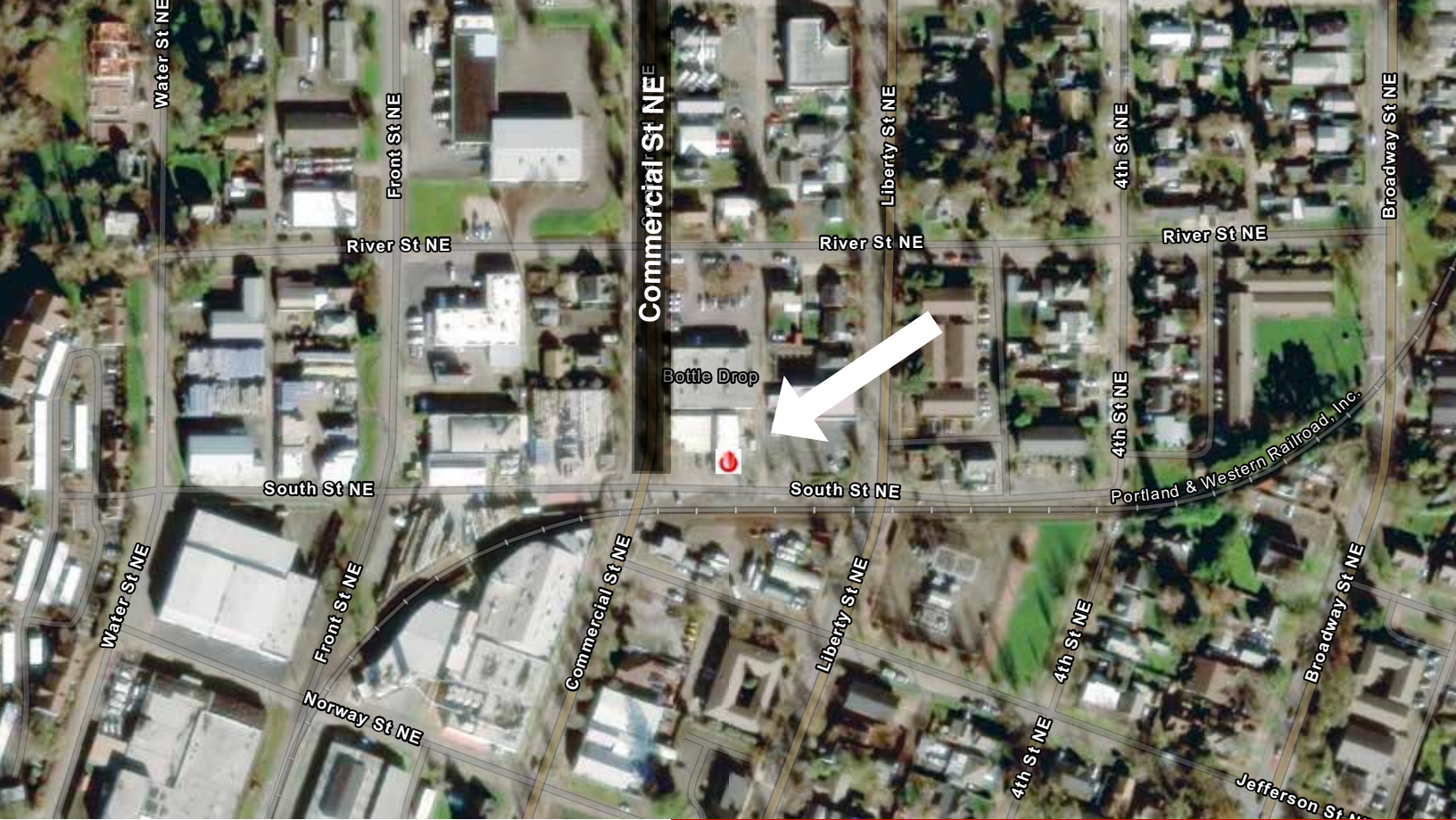
Ian Levin, CCIM
NLCO

Main: 971 707 4590
ian@nathanlevinco.com

www.nathanlevinco.com
lic #200510306

Oregon Real Estate Agency Disclosure Pamphlet





LOCAL BUSINESSES

- R & R Tree Service
- Ennis Paint Store
- Industrial Welding Supply
- Salem Chamber of Commerce
- Salem Sign Shop
- Broadway Commons & Coffeehouse
- Saffron Supply
- Enterprise Rent-A-Car
- Titan Auto Repair



Ian Levin, CCIM
NLCO

Main: 971 707 4590
ian@nathanlevinco.com

www.nathanlevinco.com
lic #200510306



LOCATION

Area Map

1810 Commercial St NE Salem OR 97301

Positioned along bustling Commercial Street NE, this property benefits from strong visibility and convenient access to downtown Salem, surrounded by a diverse mix of retail and professional services. Its central location offers quick connectivity to major thoroughfares and established neighborhood trade areas.

Oregon Real Estate Agency Disclosure Pamphlet



Employment Overview

1810 Commercial St NE, Salem, Oregon, 97301 2

Ring band of 0 - 1 miles



INCOME

\$29,913
Per Capita Income

\$53,956
Median Household Income

\$32,898
Median Net Worth

BUSINESS

1,048
Total Businesses

10,628
Total Employees

COMMUTERS

16.8%
Spend 7+ hours commuting to and from work per week

62.8%
Drive Alone to Work

EDUCATION

11.8%
No High School Diploma

14.6%
High School Diploma

38.7%
Some College/Associate's Degree

30.5%
Bachelor's/Grad/Prof Degree

KEY FACTS

10,826
Population

35.2
Median Age

4,457
Households

\$43,727
Median Disposable Income

EMPLOYMENT

55.1%
White Collar

22.2%
Blue Collar

22.7%
Services

4.2%
Unemployment Rate



Source: This infographic contains data provided by Esri (2025, 2030), Esri-Data Axle (2025), Esri-MRI-Simmons (2025), ACS (2019-2023).

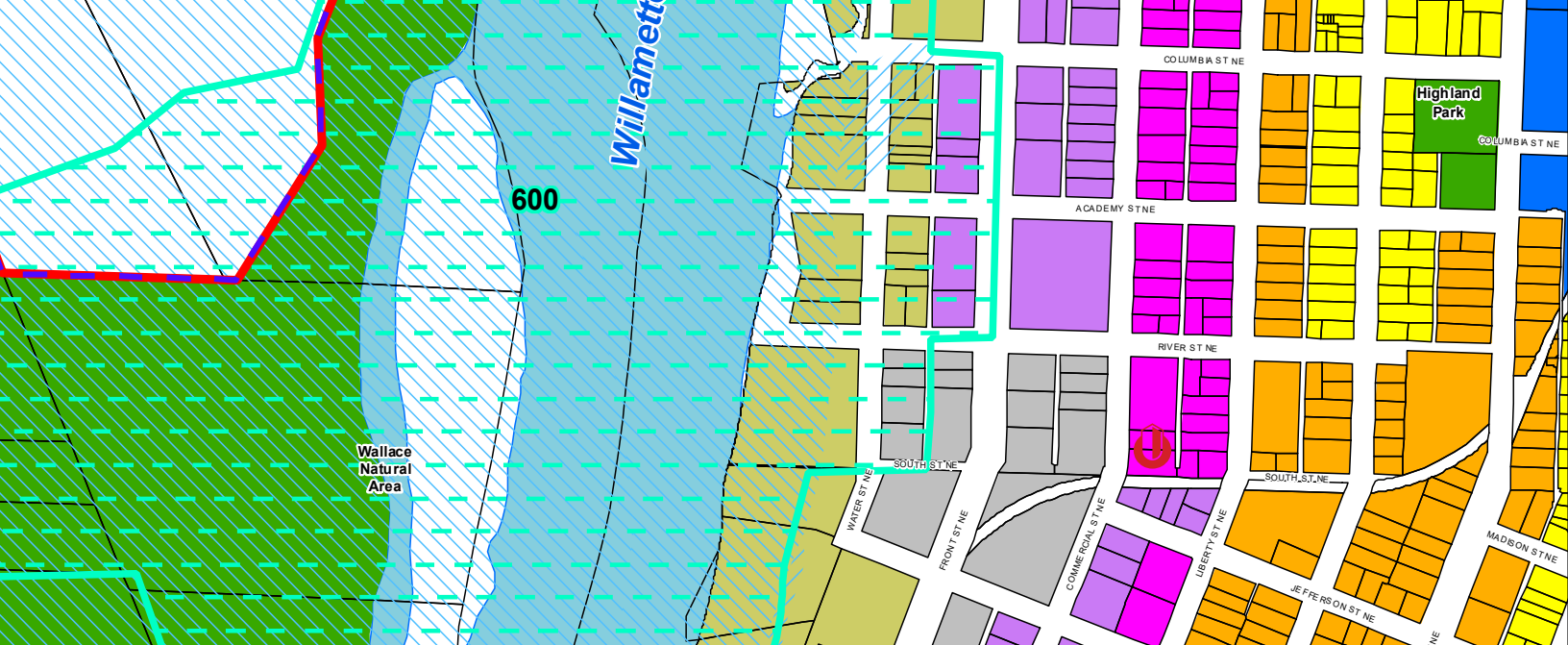
© 2026 Esri



Ian Levin, CCIM
NLCO
Main: 971 707 4590
ian@nathanlevinco.com
www.nathanlevinco.com
lic #200510306

Oregon Real Estate Agency Disclosure Pamphlet





- Zoning Designations**
- CB - Central Business District
 - CG - General Commercial
 - CO - Commercial Office
 - CR - Retail Commercial
 - EC - Employment Center
 - EFU - Exclusive Farm Use
 - ESMU - Edgewater/Second Street Mixed-Use Corridor
 - FMU - Fairview Mixed-Use
 - IBC - Industrial Business Campus
 - IC - Industrial Commercial
 - IG - General Industrial
 - IP - Industrial Park
 - MU-I - Mixed Use-I
 - MU-II - Mixed Use-II
 - MU-III - Mixed Use-III
 - MU-R - Mixed Use - Riverfront
 - NH - Neighborhood Hub
 - PA - Public Amusement
 - PC - Public-Private Cemetery
 - PE - Public-Private Education
 - PH - Public Health
 - PM - Capitol Mall
 - PS - Public Service
 - RA - Residential Agriculture
 - RM1 - Multiple Family Residential 1
 - RM2 - Multiple Family Residential 2
 - RM3 - Multiple Family Residential 3
 - RS - Single Family Residential
 - SWMU - South Waterfront Mixed-Use
 - WSCB - West Salem Central Business District
 - Overlay Zone *
 - Historic District *
 - Willamette Greenway/Compatibility Review Boundary
 - Flood Plain
 - Flood Way
 - City Limits
 - Urban Growth Boundary
 - Taxlots
 - Water
 - Schools



ZONING DESCRIPTION (CG) General Commercial

1810 Commercial St NE Salem OR 97301

The General Commercial (CG) zone in Salem is intended to accommodate a wide range of retail, service, and commercial uses that serve both local and regional markets. Its primary focus is on high-visibility, auto-oriented development along major corridors, supporting businesses that benefit from strong traffic exposure and accessibility. For details on this zone, the code can be found on our website under the resources page.

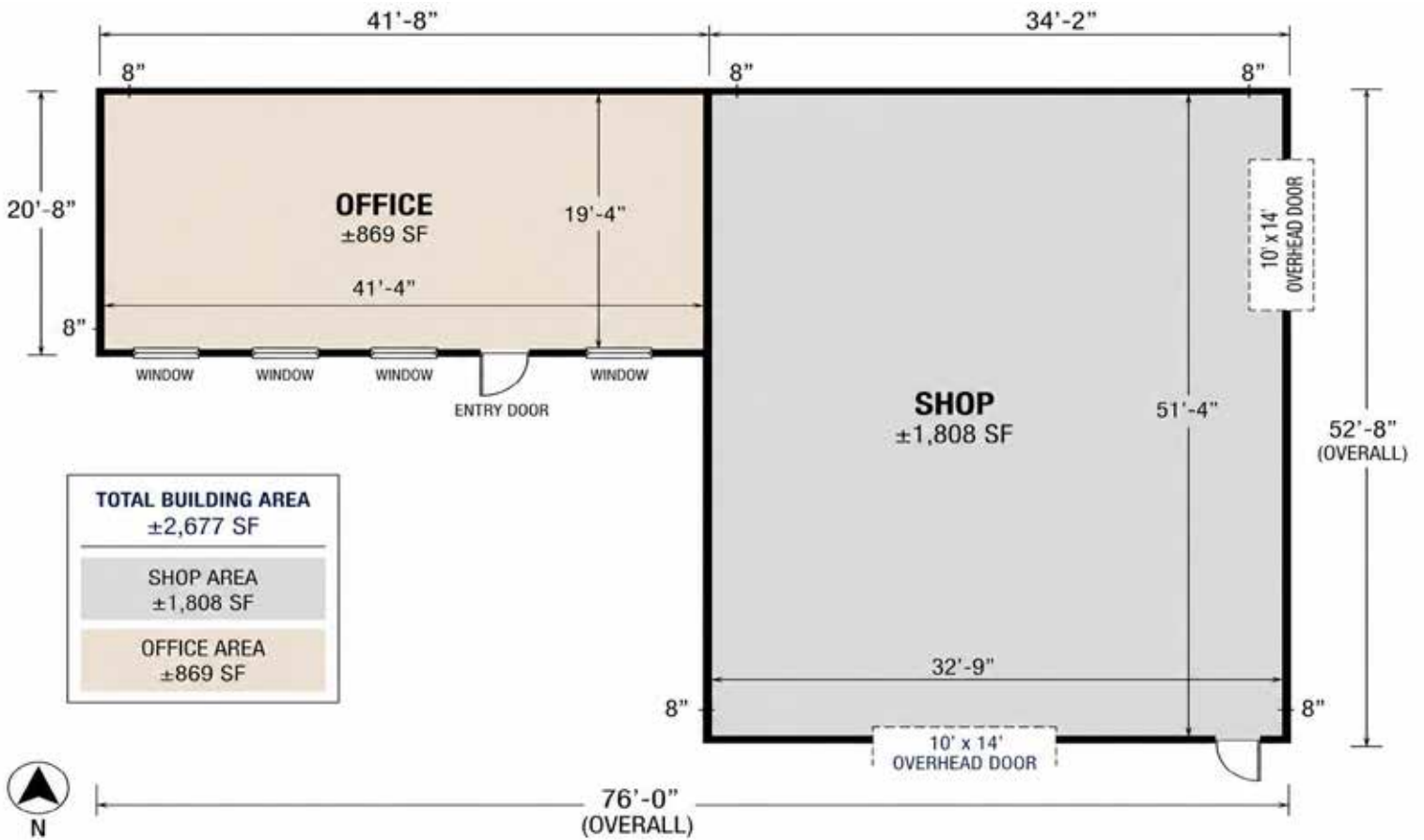


Ian Levin, CCIM
NLCU

Main: 971 707 4590
ian@nathanlevinco.com
www.nathanlevinco.com
lic #200510306

Oregon Real Estate Agency Disclosure Pamphlet





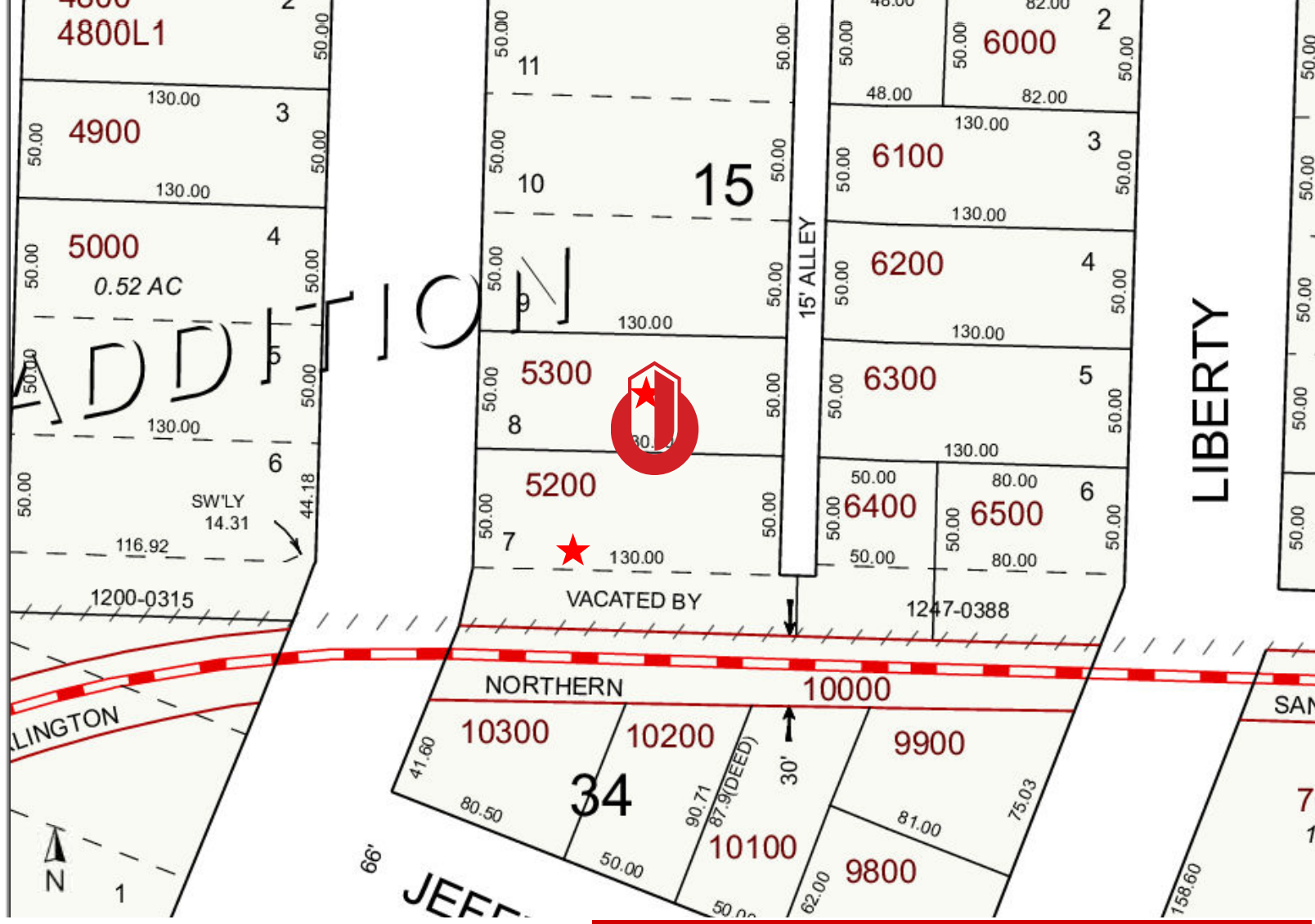
Ian Levin, CCIM
NLCO

Main: 971 707 4590
ian@nathanlevinco.com

www.nathanlevinco.com
lic #200510306

Oregon Real Estate Agency Disclosure Pamphlet





COUNTY RECORDS

- Tax acct #587636 & 587635
- Map Tax Lot #073W15DD05300
- .39 Acres
- 5,498 SF bldg
- Parcel #5300 & 5200
- Property Class 201
- 2025 taxes \$7,909.60



LOCATION Parcel Map

1810 Commercial St NE Salem OR 97301

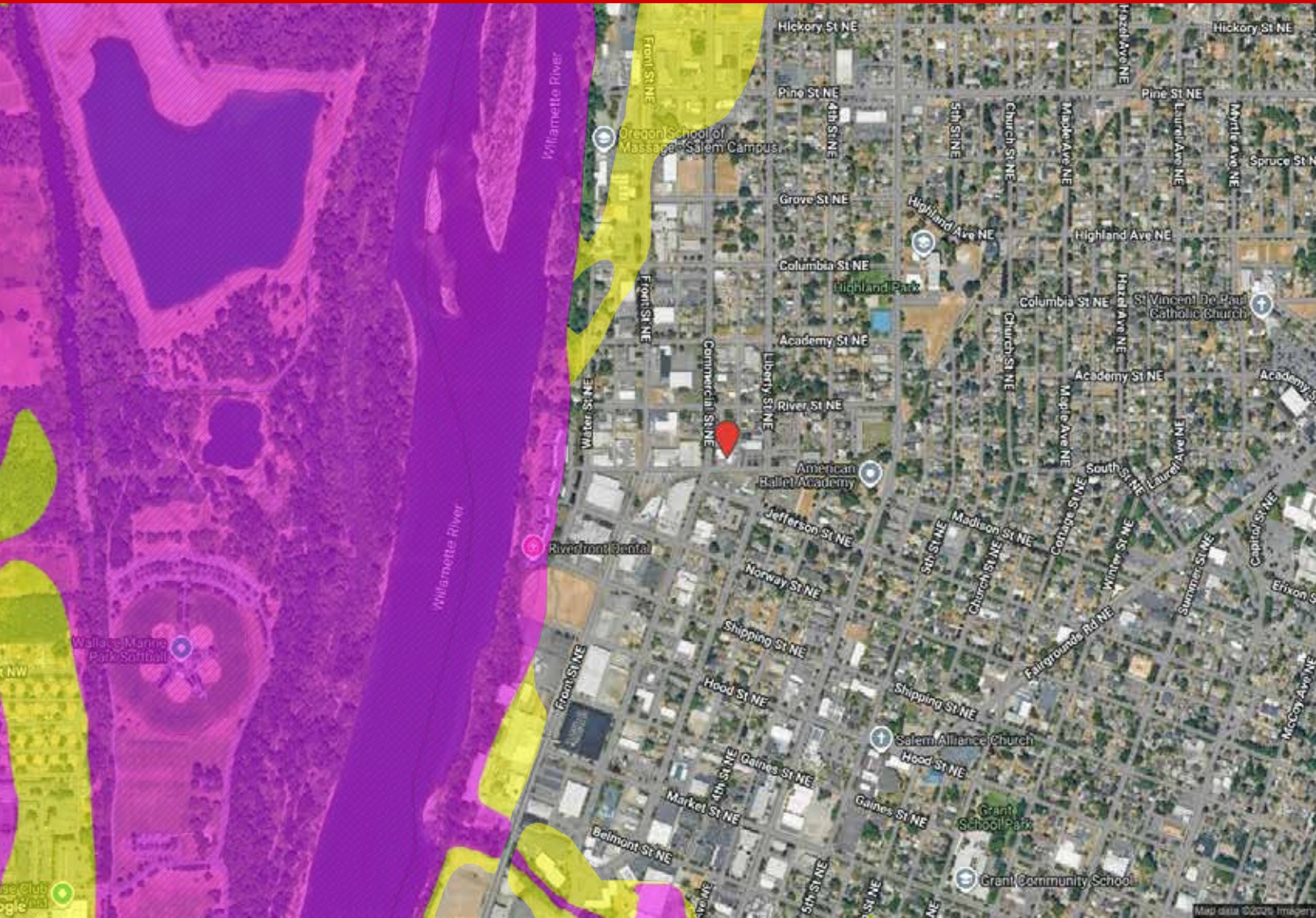
Variety of government incentive programs are available from Marion County and the City of Salem. Check with the Strategic Economic Development Corp (SEDCOR) for guidance on which program is best suited for your business.



Ian Levin, CCIM
 NLCO
 Main: 971 707 4590
 ian@nathanlevinco.com
 www.nathanlevinco.com
 lic #200510306

Oregon Real Estate Agency Disclosure Pamphlet





Flood Zones: X500 or B Zone A Zone V Zone D Zone Floodway CBRA



Ian Levin, CCIM
NLCO

Main: 971 707 4590
ian@nathanlevinco.com
www.nathanlevinco.com
lic #200510306

Oregon Real Estate Agency Disclosure Pamphlet

